

INSTRUMENTS GENERAUX

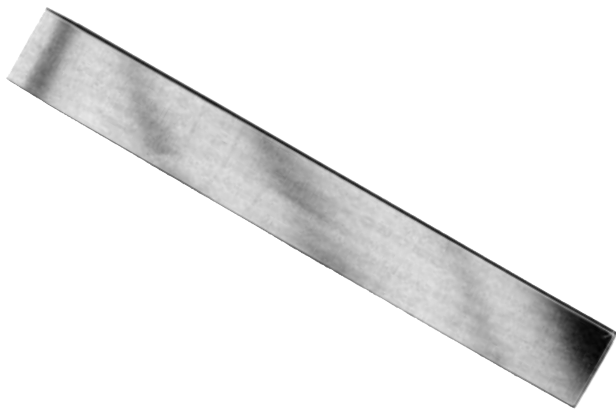
GENERAL INSTRUMENTS

CISEAUX A OS - OSTEOTOMES

BONE CHISELS - OSTEOTOMES

**OSTEOTOME DROIT DE  
LAMBOTTE**

**LAMBOTTE STRAIGHT  
OSTEOTOME**



	Largeur
	Width
TDETNZG06230	6 mm / 230 mm
TDETNZG10230	10 mm / 230 mm
TDETNZG12230	12 mm / 230 mm
TDETNZG15230	15 mm / 230 mm
TDETNZG20230	20 mm / 230 mm
TDETNZG25230	25 mm / 230 mm
TDETNZG30230	30 mm / 230 mm
TDETNZG38230	28 mm / 230 mm
TDETNZG44230	44 mm / 230 mm
TDETNZG50230	50 mm / 230 mm

**OSTEOTOME COURBE  
DE LAMBOTTE**

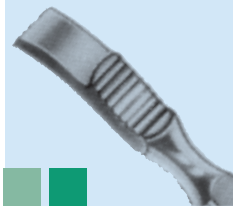
**LAMBOTTE CURVED  
OSTEOTOME**



	Largeur
	Width
TDEUNZG06230	6 mm / 230 mm
TDEUNZG10230	10 mm / 230 mm
TDEUNZG12230	12 mm / 230 mm
TDEUNZG15230	15 mm / 230 mm
TDEUNZG20230	20 mm / 230 mm
TDEUNZG25230	25 mm / 230 mm
TDEUNZG30230	30 mm / 230 mm
TDEUNZG38230	28 mm / 230 mm
TDEUNZG44230	44 mm / 230 mm
TDEUNZG50230	50 mm / 230 mm



INSTRUMENTS GENERAUX  
GENERAL INSTRUMENTS



CISEAUX A OS - OSTEOTOMES  
BONE CHISELS - OSTEOTOMES

	Largeur / Longueur
	Width / Length
TDETZN10220	10 mm / 220 mm
TDETZN15220	15 mm / 220 mm
TDETZN20220	20 mm / 220 mm
TDETZN25220	25 mm / 220 mm

OSTEOTOME PLAT DE  
LEXER

LEXER FLAT OSTEOTOME



	Largeur / Longueur
	Width / Length
TDEUNZN10220	10 mm / 220 mm
TDEUNZN15220	15 mm / 220 mm
TDEUNZN20220	20 mm / 220 mm
TDEUNZN25220	25 mm / 220 mm

OSTEOTOME CONCAVE  
DE LEXER

LEXER HOLLOW  
OSTEOTOME

